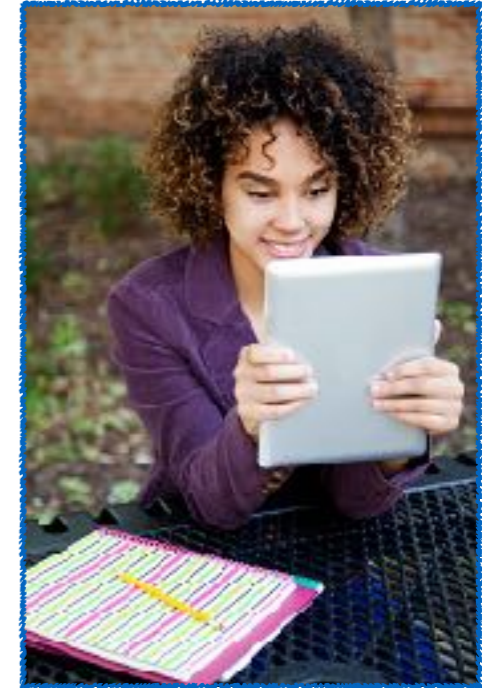


# CONSTRUCTING A WEB 2.0 DEMO

## 1. Develop your Web 2.0 Demo using the *Standard, Real World Setting, and Scoring Tool and Criteria* for Web 2.0 Demos:

- **Analyze** the Web 2.0 Demo Benchmarks created by other AD682 colleagues
- **Apply** the data and information from Learning Activities 1-3 as you develop your Web 2.0 Demo



## 2. Complete your Web 2.0 Demo and share it:

- **According to** the development, sharing, and assessment steps in the Submissions Specifications section of the *Criteria for Evaluating a Data-Driven Web 2.0 Demo*

